

# BOOYA

1917 – 1974

A Cyclone Tracy Wreck

Protected as a grave,  
historic shipwreck  
and marine  
area under the  
NT *Heritage  
Conservation  
Act*.



All wreckage  
and objects  
are protected  
**'Look but  
don't touch'.**  
No penetration diving  
permitted.



Permits are required to access.



Marine life protected – no fishing,  
spearing or collecting.

Heritage Conservation Services

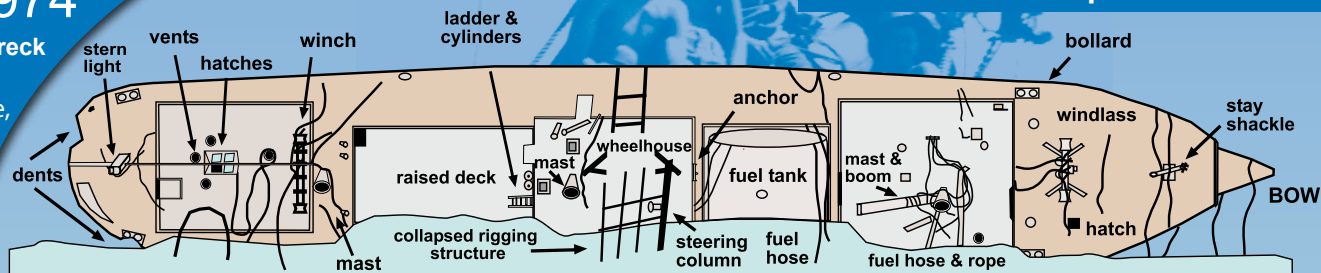
Department of Natural Resources, Environment and The Arts  
[www.nt.gov.au/heritage](http://www.nt.gov.au/heritage)

with the assistance of the 2006 Booya research team volunteers.

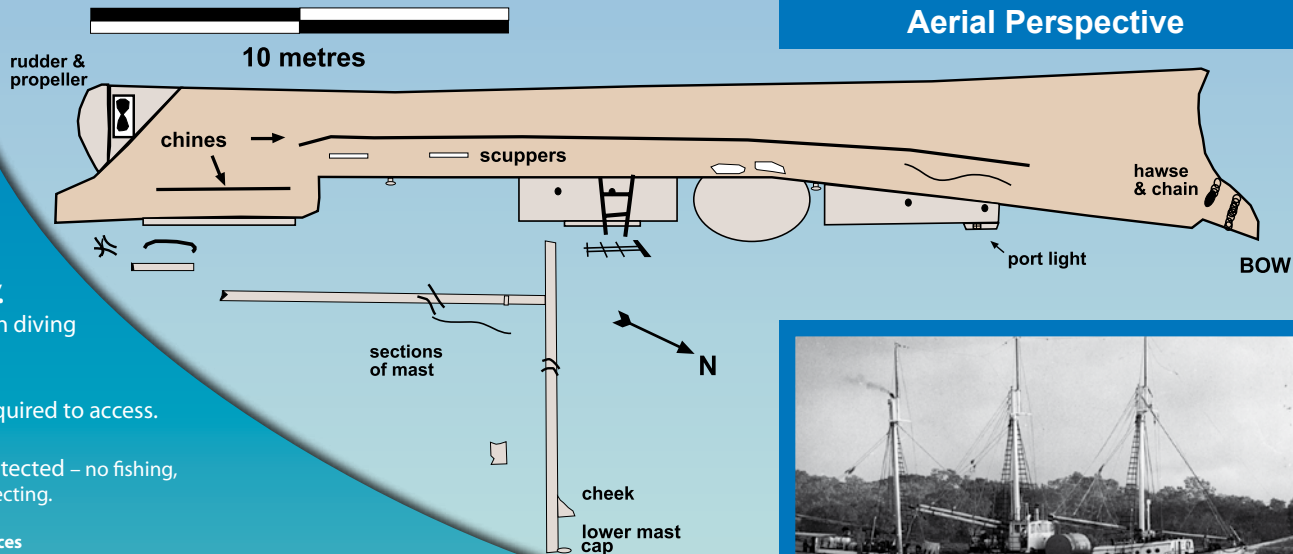


Northern Territory Government

## Deck Perspective



## Aerial Perspective





# Wreck of the **BOOYA**

A guide to dominant marine life.



Muller's coralfish



Ox-eye herring



Grey mackerel



Short-finned batfish



Queensland groper



Estuary cod



Cardinalfish



Moses snapper



Great barracuda

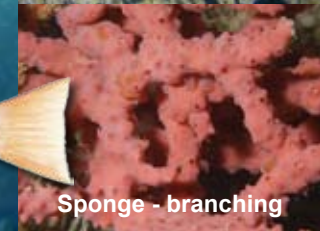
Images courtesy of MAGNT, WA Museum and P. Darlington.



Northern Territory Government



Coral - soft



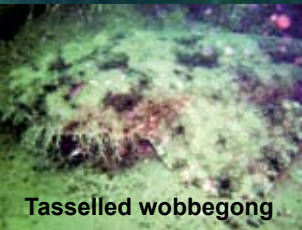
Sponge - branching



Hydroid



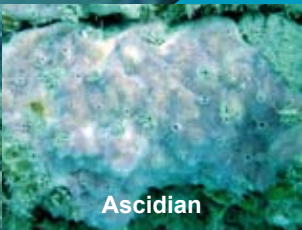
Decorator crab



Tasselled wobbegong



Sponge - vase



Ascidian



Coral - hard